



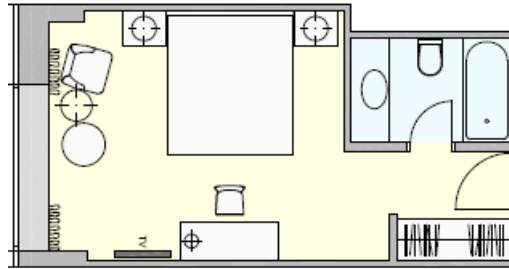
INTERCONTINENTAL®
WIEN



ROOMS & SUITES

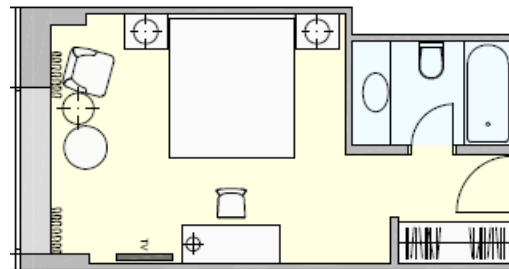
CLASSIC ROOMS / CLASSIC ROOMS HIGH FLOOR

- Views to the Stadtpark or the Concert House
- Twin or king beds
- 25 m²
- Floors 1 to 7 / 8 to 10
- Connecting doors on request
- Max. occupancy 2 people plus a baby crib
- Turn down service on request

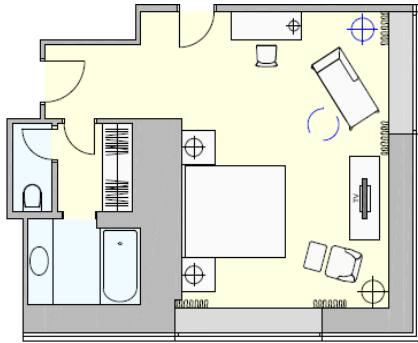


CLASSIC ROOMS LOUNGE ACCESS

- Views to the Stadtpark or the Concert House
- All king beds
- 25 m²
- Floors 11 and 12
- Connecting doors on request
- Max. occupancy 2 people plus a baby crib
- Turn down service
- Club lounge access



PREMIUM ROOMS



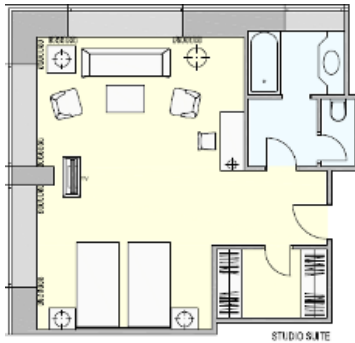
- Views to the Stadtpark or the Concert House
- All features of a Classic Room
- Twin or King beds
- 35 m²
- Floors 1 to 9
- Connecting doors on request
- Max. occupancy 3 people (extra bed for third person or a baby crib)
- Turn down Service on request

PREMIUM CORNER ROOMS



- All features of a Classic Room
- All king beds
- 35 m²
- Floors 2 to 9
- Connecting doors on request
- Max. occupancy 3 people (extra bed for third person or a baby crib)
- Turn down Service on request

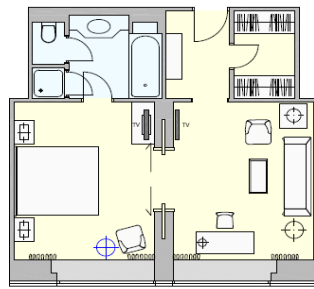
JUNIOR SUITE



- Views to the Stadtpark or the Concert House
- Twin or King beds
- 45 m²
- Floors 4 to 12
- Max. occupancy 3 people (extra bed for third person) and a baby crib
- Cozy living area
- Daily Turn down Service
- Club Lounge access
- Bathroom with bath tub and daylight
- Separate restroom

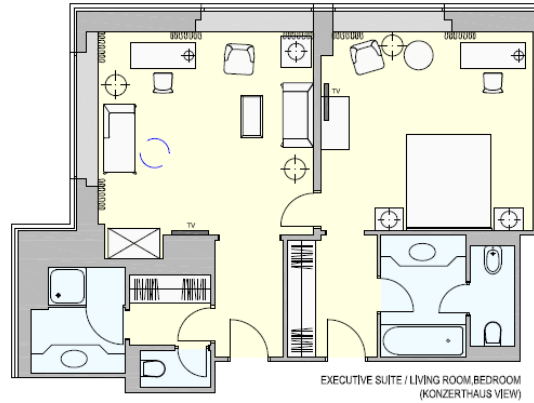
ONE-BEDROOM SUITE

- Stadtpark Views
- Twin or King beds
- 50 m²
- Floors 10-12
- Max. occupancy 3 people (extra bed for third person) and a baby crib
- Bedroom & Living room can be separated with sliding door
- Living area can be used for business appointments
- Walk-in wardrobe
- Daily Turn down Service
- Club Lounge access

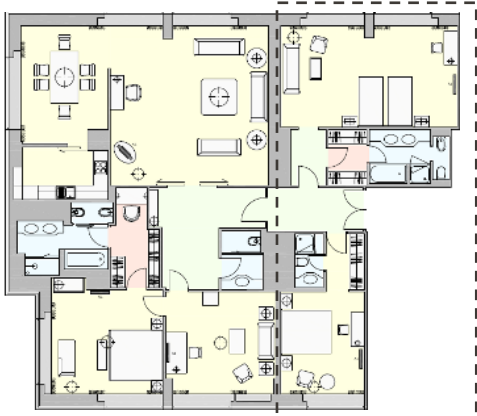


SENIOR SUITE

- Views to the Stadtpark or the Concert House
- Twin or King beds
- 70 m²
- Floors 8 to 12
- Max. occupancy 4 people (extra beds for third and fourth person) plus 2 baby cribs
- Two separate entrances to sleeping and living room
- Living area can be used for business appointments
- Walk-in wardrobe
- Daily Turn down Service
- Club Lounge access
- 2 bathrooms, one with shower, one with bathtub
- Separate restrooms
- 2 Minibars and 2 TV's



PRESIDENTIAL SUITE



- Breathtaking view of Vienna
- 140 m² up to 210 m² with an additional club room plus a Studio Suite (rooms on the right side of below floor plan)
- Located on the 12th floor
- 1 bedroom, living room, office, dining room, bath room, restroom
- Very spacious and luxurious Suite
- Living area can be used for business appointments, meetings, presentations and interviews
- Ideal for heads of State, ministers, state visits as a prestigious accommodation
- Daily turn down Service
- Club Lounge access
- Complimentary room service breakfast